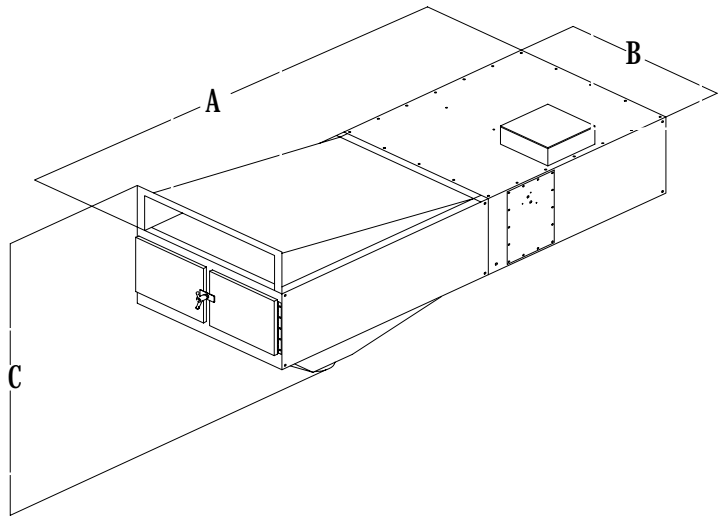


HCF Horizontal Cartridge Filtration Collectors

HCF Series Horizontal Cartridge

Filtration systems are designed to provide efficient, cost effective control of dry dusts, fumes, and general air borne particulate contaminants generated from sanding, grinding, welding, and other processes. Typically utilized for control of moderate to heavy concentrations of dry contaminants, the HCF series collectors are provided with self-cleaning, pulse-jet filter cleaning to minimize maintenance and reduce replacement filter costs.

The ceiling mounted HCF series collectors are available in two configurations, un-ducted models for ambient air cleaning of the general plant air and ducted source capture systems for control of contaminants at the generating source.



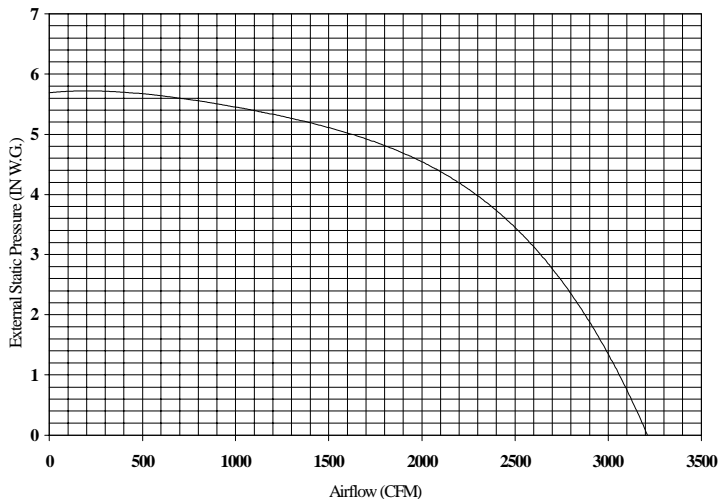
Options

- Drum Kit: To contain collected contaminants, Comes with, 55gal Drum, Cover, Locking Ring, 8'x10" Hose, and (2) 8" Hose Clamps
- Delay Pulse Timer Kit: For lighter loads, allows you to program the pulsing in intervals of up to 6 hrs.
- Photohelic Smart Pulse Kit: For use instead of the magnehelic gauge, activates pulsing systems when the pressure drops below an adjusted level
- Arm Mount Box: for ducted units, allows direct mounting of a mechanical arm to the collector (arm not included)
- Collar Mount Plates: for ducted units to run hard ducting to the collector

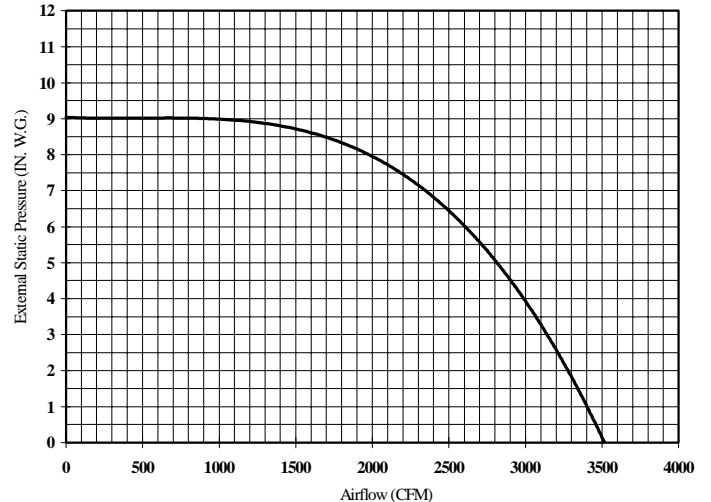
Key Features

- Efficient, direct drive, backward curve plug fan blowers
- Option of a 3 HP or a 5 HP plug fan motor
- HEPA-like Cartridge filters with 960 sq. ft. of filtration surface provide 99.9% efficiency
- Unique self-cleaning pulse jet system keeps filters clean, and helps reduce maintenance
- 2.75 sq. ft. of intake area on un-ducted systems
- Available as either a ducted unit or an un-ducted unit

HCF-3000 & HCF-3030 UNIT PERFORMANCE CURVE in 60 Hz (3450 RPM)



HCF-3050 UNIT PERFORMANCE CURVE at 60 Hz(3450 RPM)



Unit Type	Filter Area	CFM	AxBxC in.	Weight
HCF-3000 3hp un-ducted	960	3000	100x37x53	494
HCF-3030 3hp ducted	960	3000	100x37*x44	494
HCF-3050 5hp ducted	960	3000	100x37*x44	494

*not including arm box or collar